

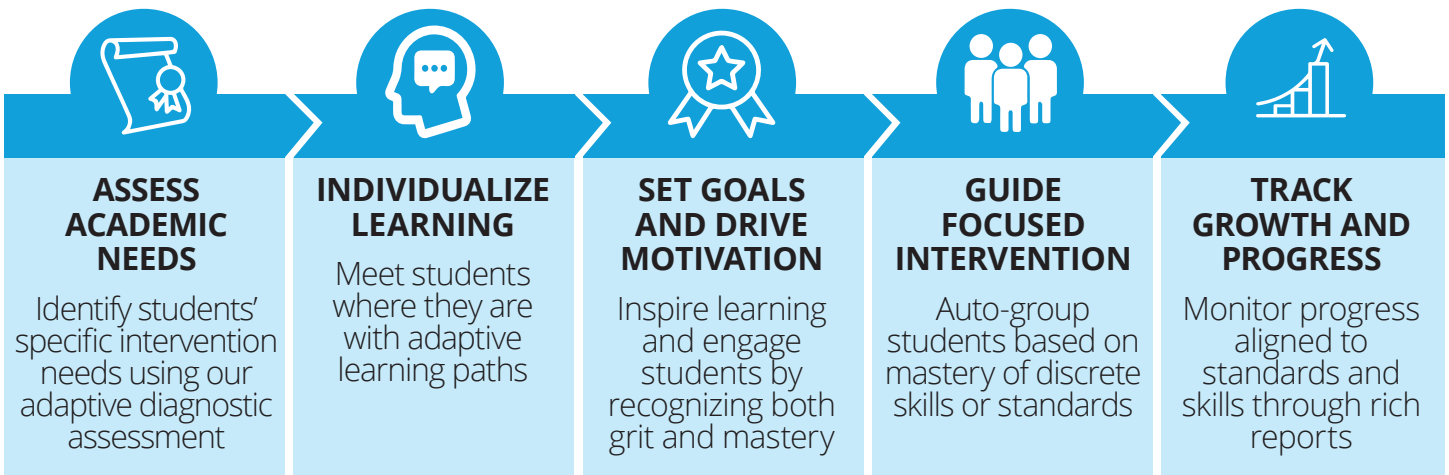
# An Exact Path for INTERVENTION

success and academic growth



Personalize intervention across K-12 reading, language arts, and math

Exact Path facilitates targeted support and intervention by combining evidence-based adaptive diagnostic assessments and individualized learning paths you can trust.



# Personalize an intervention plan for every learner

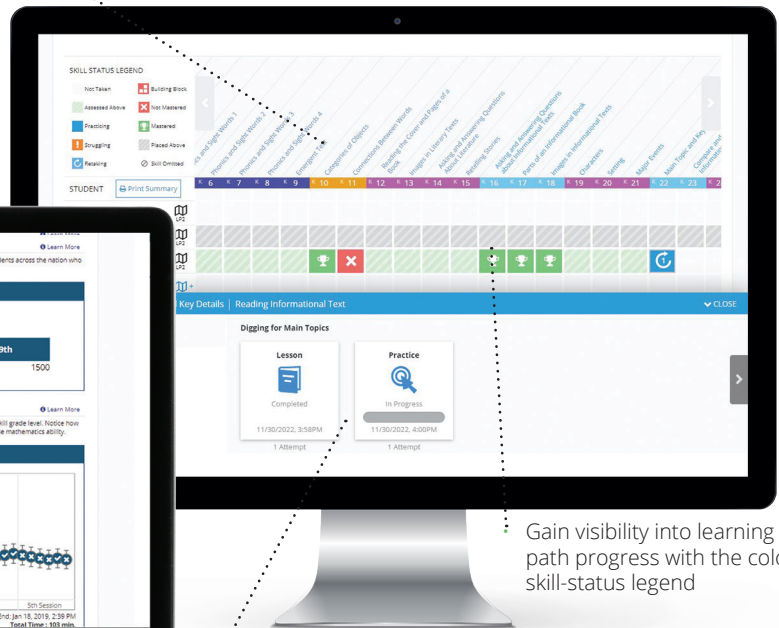
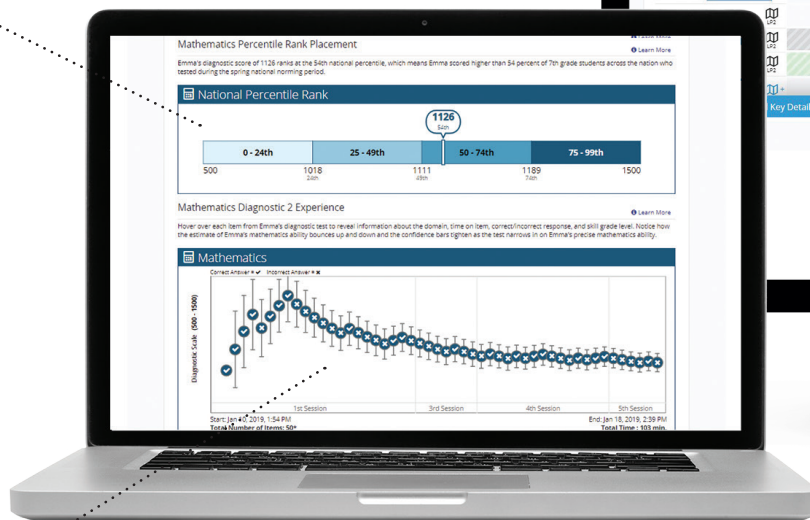
Exact Path helps you understand each individual student so that you can pinpoint areas of weakness, deliver meaningful support, and adjust instruction as needed.

## Explore class and student data

- Share detailed pictures of performance with stakeholders in parent-teacher conferences
- Delve into key data points to report growth and progress during IEP meetings
- Make data-driven decisions for necessary SPED or intervention services

Review each diagnostic scale score and see how that score compares to other students nationally via a National Percentile Rank.

View the full progression of K-12 skills, and pinpoint where specific skill gaps lie



Gain visibility into learning path progress with the colored skill-status legend

Review discrete skill performance, including attempts and scores, to determine where learning breaks down

Dig into each specific assessment administration to reveal correct/incorrect response details, time on item, and skills and domains assessed.



[Exact Path is] almost like having a co-teacher with you that can remediate and accelerate while you make sure you're paying attention to the core content.



— Dr. Cyndee Blount  
Principal at Acquinton Elementary School  
King William County Public Schools, Virginia

# Built to Strengthen Intervention



## TEACHER FEATURES

### Teacher Challenges

Challenge Badges can be awarded based on mastery or time-on-task, with specific goals selected by the teacher.

### Accommodations

Educators can activate a text-to-speech feature, as well as initiate an easy login option to simplify access.

### Edit Learning Paths

Educators have the ability to edit learning path placement as needed for specific students or auto-generate a learning path for those not ready to take the assessment.

### Assignment Creation

Search by skill or standard to build additional just-in-time online assignments or print off worksheets and lesson ideas.

## STUDENT FEATURES

### Precise Assessment Placement

An objective and valid adaptive diagnostic assessment places students where they are ready to start learning.

### High-Quality Curriculum

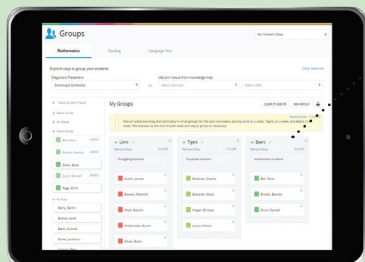
Students receive an individualized learning path with high-quality lessons delivered in bite-sized chunks

### Adaptive Learning Paths

Progress Checks assess skill mastery and adapt a student's learning path, providing struggling students with building blocks for remediation.

### Age-Appropriate Lessons & Interfaces

Varied age-appropriate content and three user interfaces ensure students learn in a suitable environment.

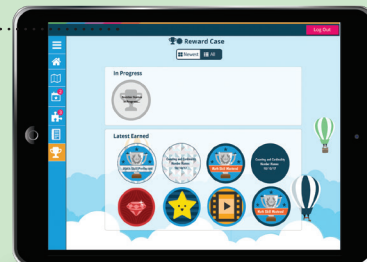


### Auto-Grouping

Quickly create data-driven small groups to help plan for focused remediation.

### Engagement

Mastery trophies are awarded as students demonstrate success on each skill in a Progress Check.



# Develop an action plan to target intervention needs

Collecting data that you can trust for critical intervention decisions can be overwhelming. Reports are explicitly designed to help you take action and make informed instructional decisions every step of your students' academic journeys.

## Access districtwide growth and performance reports

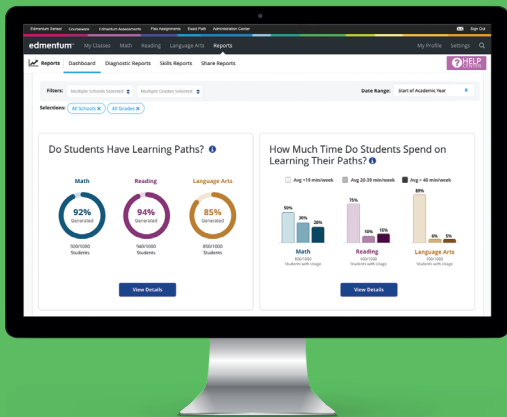
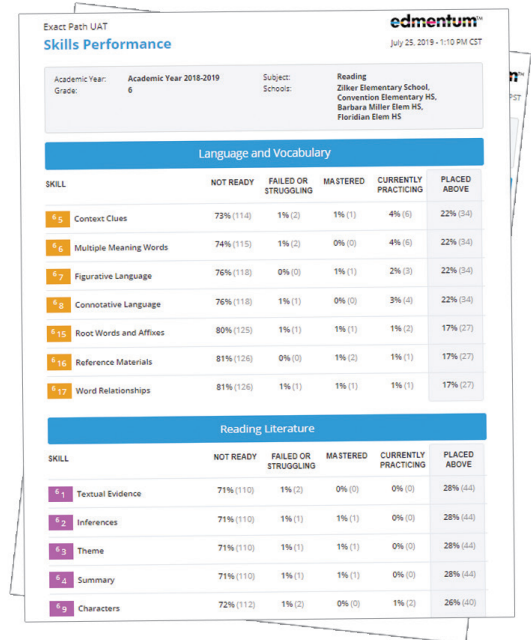


### National Percentile Rank Trends:

Inform key staffing and resource decisions by evaluating growth trends based on diagnostic assessment scores

### Skills Performance:

Guide focused intervention investment by evaluating how well students are performing on grade-level skills throughout the school year.



## Review interactive data views

Aggregated diagnostic results provide big picture views of assessment performance and growth. Drill into data according to grade, class, or teacher to determine opportunities for targeted intervention.

Contact us today for more information.  
[www.edmentum.com](http://www.edmentum.com) - 800.447.5286



edmentum.com  
 800.447.5286  
 info@edmentum.com  
 AC026-73 120622 © 2022 EDMENTUM, INC.

5600 W 83rd Street  
 Suite 300, 8200 Tower  
 Bloomington, MN 55437

+44 (0)1572 492576  
 8/9 Saddlers Court, Oakham  
 Ruthland, LE15 7GH  
 United Kingdom