

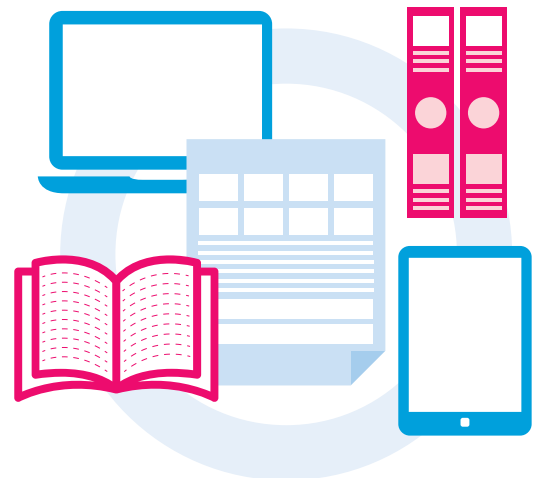
Early Literacy Needs Analysis



Early literacy education in America is crucial, yet faces significant challenges. Despite growing awareness, only about 35% of fourth graders are reading at or above proficiency, according to the National Assessment of Educational Progress (NAEP).

Reading is of utmost importance; it lays the groundwork for success in all subjects and long-term academic achievement. Students who struggle with literacy often face difficulties in other areas, leading to lower graduation rates and limited career opportunities. Increased investment in early literacy programs and teacher training are essential to ensure that all children have the skills they need to thrive.

This analysis can help you evaluate your current literacy program(s) and identify any gaps in existing resources as well as understand the capacities and constraints of your school or district, so you know where to invest to build a successful program.



Evaluation

What state-mandated initiatives does my district need to accomplish in literacy assessment, curriculum, and professional development?

- Aligned to state standards
- Implement state selected dyslexia screener
- Adopt evidence-based, high-quality instructional materials aligned to the Science of Reading
- Adopt state mandated intervention solutions for students identified with reading difficulties
- Provide professional development for teachers
- Provide family and caregiver notification

In what setting are you currently serving your population in need of additional reading support?

- Classroom instruction
- Pull-out intervention programs
- Out of School Programs
- Summer programs
- Alternative schedules
- Community partners (Boys & Girls Club, etc.)
- Other

What level of research evidence supports your existing curriculum's program effectiveness on student outcomes?

- Strong evidence from multiple randomized controlled trials (ESSA Tier 1)
- Moderate evidence from quasi-experimental studies (ESSA Tier 2)
- Promising evidence from correlational studies (ESSA Tier 3)
- Limited or no research evidence available

Which literacy skills does your current program primarily target?

- Phonemic awareness
- Phonics
- Fluency
- Vocabulary
- Comprehension
- Writing
- All the above

What are the school/district expectations of any adopted content?

- Aligned to state standards
- Aligned to a recognized literacy framework
- Content-area literacy instruction
- Research-based instructional strategies
- Other

Does your current program meet these criteria?

- Yes
- No

What customizations would support a more effective program?

- Option to rearrange curriculum to create custom resources
- Ability to import instructor-created content (e.g., documents, links, presentations)
- Flexible assignment options to meet student interests/needs
- Accessibility options
- Third-party assessment integration
- Other

What type of assessment tools does the program provide?

- Universal Screening
- Formative/Classroom Assessments
- EOC or Summative assessments
- Performance Tasks Assessments
- Teacher observation checklists
- Other

Focus Question

If you could design an early literacy program without worry of funding or resource restraints, what would your ideal program look like?



Technology Constraints

What devices are available for students to use?

- Computer lab/media center
- Laptop/tablet carts
- 1:1 devices (i.e., devices students carry with them throughout the year)
- Personal devices (BYOD)

What procedures do teachers/staff need to learn to navigate the program?

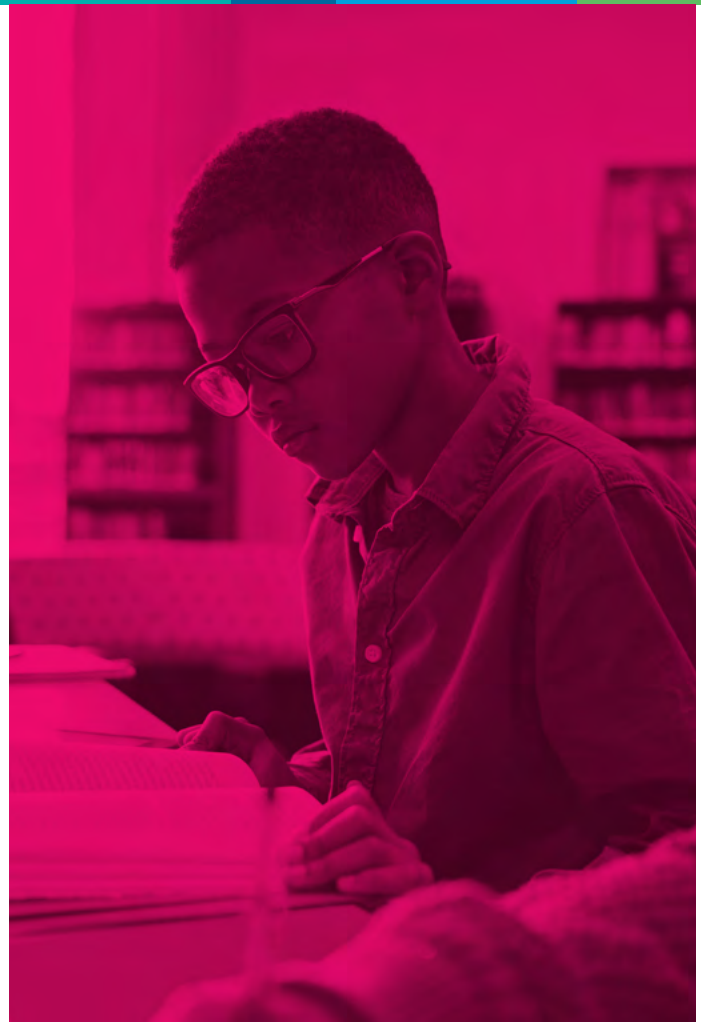
- How to enter grades for assignments
- How to communicate with students
- New ways to deliver content (e.g., video, message board, etc.)
- How to best collaborate with colleagues
- How to differentiate instruction under the program
- Other

What procedures do students need to utilize to navigate the program?

- How to ask for help
- How to log in and out of the program
- How to navigate to assignments
- How to monitor their own progress
- Other

What are your “must-have” technology features?

- Single sign-on support
- 24/7 technical support
- Integration with the SIS
- ADA compliance and accessibility features
- Other



Focus Question

Did your last technology roll-out go as expected?
How does that experience inform future initiatives?

Stay on Track

In what ways do instructors check in with students to discuss progress?

- Weekly progress meetings
- Regular emails/texts/phone calls
- Periodic reporting
- Parent-teacher meetings
- Other

How often are instructors required to check progress and touch base with students?

- Daily
- Weekly
- Monthly
- Each grading period
- Each semester
- Need vendor partner input

How will instructional quality be measured?

- Student data
- Student EOC success
- Formal observations by staff
- Survey data from students/parents
- Other

How is student work captured for future reference/portfolios?

- Cloud storage
- Binders/folders
- Need vendor input
- Not necessary

How do you gather feedback from students, parents, teachers, and other stakeholders?

- District phone lines/chat bots
- In-person events
- Phone surveys
- Online surveys
- Social media
- Other

How do you measure success for the program?

- Significant literacy growth
- Increased academic success
- Increased EOC/state testing success rate
- Stakeholder satisfaction
- Future grade readiness
- Engagement

What are some ways the program may need to grow/change in the future?

- Richer selection of content
- Ability to serve more students
- Ability to include other locations/schools
- More personalized content
- More advanced technology options (e.g., mobile use, BYOD, AI, etc.)
- Other

Focus Question

Project 1/5/10 years out—what do want your literacy services to look like?

Edmentum offers comprehensive reading and comprehension solutions designed to foster lifelong readers and enhance academic success. We base our approach on scientific reading research, which focuses on establishing solid foundations aligned with the principles of the Science of Reading.

Key Features

Accelerated Reading: Edmentum's programs aim to speed up reading proficiency by grade 3 and include universal screening for dyslexia risk factors. We employ explicit and systematic instruction to help students master phonics skills and build comprehension.

Comprehension Development: Mini-tutorials, think-alouds, and guiding questions introduce students to metacognitive strategies as they advance. Built-in glossaries and dictionaries support vocabulary development, while relevant text passages promote real-world connections.

Evidence-Based Curriculum: The Science of Reading underpins Edmentum's curriculum, aligning it to state standards. We offer systematic phonics instruction, phonological awareness, comprehension and text analysis tools, and assessment-driven learning.

Benefits and Features

- Systematic phonics instruction
- Phonological awareness
- Comprehension and text analysis tools
- Assessment-driven learning
- Reading intervention
- Concept and credit recovery options
- Test readiness programs
- Data and reporting, including Lexile® measures

Through a variety of tools and resources, Edmentum strives to aid educators in nurturing early literacy skills, bolstering reading comprehension, and attaining positive academic results for students with varying grade levels and learning styles.



Exact Path

Offers diagnostic-driven learning paths and a top-rated academic screener by the National Center on Intensive Intervention (NCII) for K-12 students in math, reading, and language arts



Courseware

Provides digital curricula for grades 6 through adult learners, focusing on credit recovery and expanded course access



Tutorials

Delivers pretest-driven concept recovery for grades 6-12



EdOptions Academy

Combines K-12 learning technology with state-certified teachers for virtual instruction



Virtual Tutoring

Offers intensive K-12 tutoring to close learning gaps



Apex Courses

Provides digital curricula for grades 6 through adult learners

Contact us today for more information.
www.edmentum.com | 800.447.5286